



NOT NEARBY CAN'T BE HEARD. HEARD THAT BUNNIE.

FROM THE ROAD  
CHANCE



CANADIAN WESTERN AGRIBITION 50TH  
ANNIVERSARY NATIONAL ANGUS SALE  
NOVEMBER 26, 2021 | 7 PM  
JOHN DEERE SALES ARENA





# *From the desk* AT T BAR C

It is with great anticipation, and in short order, that we are proud to present you the National Angus Sale on the Friday night of Canada's largest purebred livestock exposition in Regina, during its historic 50th Anniversary. The offering is something that will be talked about as the untouchables of every program are included in this book. Picks from the top Angus cowherds in all of Canada are included, as well as some very intriguing frozen genetics that are rare and valuable. The bred heifer section may be small in numbers, but analyze what has been made available... certainly something that can fast track any program out there. The heifer calves involved in this elite sale are down right dreamy good. Some already have backdrop experience from this fall, and others are just about to begin. We would encourage every Angus breeder and promoter to be with us Friday night, as it will be one of the highlight sales of the entire year. We would like to thank the consignors involved who have stepped up with only their best to make this sale possible, and the crew at CWA for their efforts as well. From all of us at T Bar, we will see you in Regina to gather around like usual for this exciting event and the 50th Anniversary!

*Ben Wright*



**CHRIS POLEY**  
306-220-5006



**SHANE MICHELSON**  
403-363-9973



**BEN WRIGHT**  
519-374-3335



## **SALE STAFF**

### **AUCTIONEER**

CHRIS POLEY 306-220-5006

### **RINGMEN**

BEN WRIGHT 519-374-3336  
SHANE MICHELSON 403-363-9973  
NATE MARIN 306-869-7130

### **ONLINE BIDDING AVAILABLE**



MARK SHOLOGAN 780-699-5082

## **SCHEDULE OF EVENTS**

### **THURSDAY, NOVEMBER 25**

9 AM NATIONAL BLACK ANGUS SHOW  
1:30 PM NATIONAL RED ANGUS SHOW

### **FRIDAY, NOVEMBER 26**

6-7 PM PRE-SALE VIEWING OF CATTLE IN JOHN DEERE SALES ARENA  
7 PM CANADIAN WESTERN AGRIBITION  
50TH ANNIVERSARY ANGUS SALE  
7:30 PM "BELLE OF THE BARN" PEOPLE'S CHOICE HEIFER CALF JACKPOT

### **SATURDAY, NOVEMBER 27**

4 PM AGRIBITION BEEF SUPREME  
PRESENTED BY CN

Please join the Saskatchewan Angus Association as we celebrate the 50th anniversary of Canadian Western Agribition. Everyone is welcome to attend. People's choice judging ballot is included with your meal ticket. These can be purchased all week at the Saskatchewan Angus booth located in the Canada Centre. Jackpot Entries for the show are available until Sunday November 21 at the time of cattle check in. Email office@saskatchewanangus.com or call 306-757-6133 for more information. We look forward to an evening of Angus as we celebrate CWA's 50th Anniversary.





HF ANNIE 204H • PURCHASED BY KT RANCHES FOR \$37 000

## 401 *Pick* OF THE HAMILTON FARMS 2021 BORN HEIFER CALVES

Hamilton Farms is excited to offer the pick of the 2021 born heifer calves. With over 140 young matrons to choose from, you are sure to find that special breeding piece to compliment and enhance your operation. There will be a tremendous selection of females sired by our most dominant herd sires. Showman, Alcatraz, Roper, and Profound have done an exemplary job for us, and the quality runs very deep in this group. You can trust Hamilton Farms genetics to be unique in pedigree, solid in build, with no nonsense, easy doing Angus character bred in. Over 40 years of reputation Black Angus genetics awaits your appraisal, and we look forward to opening up this opportunity for the successful bidder. Hamilton Farms will open the entire Herd Sire line up to use as service sire on selected heifer if the buyer so chooses.

**Consigned by Hamilton Farms**





HF MISS BLACKCAP 107F • PURCHASED BY KYLIE SIBBALD AND GOLDEN OAK LIVESTOCK FOR \$25 000



HF MISS BLACKCAP 288H • PURCHASED BY IRIS CREEK FARMS FOR \$10 000



HF TIBBIE 125H • PURCHASED BY GRAND RIVER ANGUS FOR \$15 500



HF EVENING TINGE 1F • PURCHASED BY MWC INVESTMENTS FOR \$25 000



HF ALCATRAZ 60F



SCHEIFELBEIN SHOWMAN 338



SITZ PROFOUND 680G



DAMS LIKE THESE...ARE SOME OF THE MOTHERS



THE LARGEST SIRE GROUPS OF THE PEN





YOUNG DALE TIBBIE 46H



HILL VALLEY RECKONING 931 - SERVICE SIRE

# 402 *Pick* OF THE YOUNGDALE ANGUS BRED HEIFERS

It is with great appreciation and also some bitter sweet feelings that we at Young Dale Angus offer a pick of one of our prized possession's in our bred heifer pen.

With it being the 50th Anniversary of Agribition, we thought it would only be fitting to offer something we have never done before and are so proud of. The strength of any cow herd is in your females, which is what we have focused on for 50 years plus. We at Young Dale are proud of our great cow families such as the Grace's, Pollyanna's, Georgina's, Kristina's, and Tilda's. Our cow families offer a unique phenotype and power with style, not sacrificing that show look we all love. Also keeping in mind the importance of structure, all things combined we feel makes our ideal type of females. Animals that work for the purebred breeder, but also growth and vigor that the commercial breeder needs.

**Without a doubt we anticipate your valued appraisal.**

**Weather permitting, we would like the pick done by the end of 2021.**

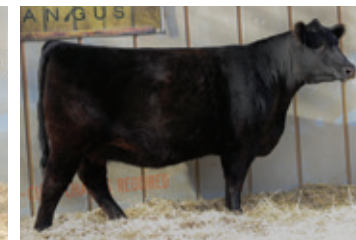
**Consigned by Young Dale Angus**



YOUNG DALE ALLEGRA 24H



YOUNG DALE COUNTESS 53H



YOUNG DALE POLLYANNA 166H





403

BAR-H

*Rita*

110H

FEMALE • • 2176774 • • AHPC 110H • • 03/05/2020

CONNEALY INTRINSIC  
S INTRINSIC 799  
S RITA 6341

EXAR FOREMAN 3871B  
BAR-H RITA 3C  
BAR-H HOPE 16A

BW: 1.8 • WW: 58 • YW: 98 • MCE: 9.0 • MILK: 32

AI bred to Bar-E-L Royal Mint 88G on June 5, 2021.

Rita 110H is a female with unlimited potential. Her overall balance, extreme depth of body along with an elegant and attractive front end lends to her overall appeal. Her EPD's are also very attractive combining all areas of production be it maternal, performance or carcass into a very functional and useful profile. She is sired by S Intrinsic 799 who's daughters in production show impeccable udder and teat quality. Her dam Rita 3C, has the same look and design as Rita 110H.

**Terms to be announced.**

Consigned by Bar-H Land & Cattle





28C



27C



38C



73A



105D

## 404 *Right* TO FLUSH YOUR PICK OF THE BAR-E-L FEMALES

At Bar-E-L we are pleased to offer the right to flush any female in our herd, including BAR-E-L Bride 28C (pictured). This cowherd has consistently produced one of the top averaging bull sales in Canada, as well as cattle that are competitive in the show ring. Their look, style and the ability to breed on producing a high level of quality makes this an interesting option. We strive to focus on maternal quality, performance, and fundamental traits that boost productivity and profitability. These are the dams of our high sellers annually. Be sure to check our Bar-E-L Royal Mint 88G in our stall at Agribition.

**We guarantee 6 Grade 1 exportable embryos, no top on the flush. We will make available any herdsire owned at BAR-E-L if you choose at no additional cost. Terms include 1/2 down, balance due when flush is completed.**

Consigned by Bar-E-L Angus





**405**

HLC NU-HORIZON

*High Rose*

969J FEMALE • • 2234423 • • CHD 969J • • 04/03/2021

CONLEY EXPRESS 7211  
**EXAR EXPRESS WAY 1079B**  
 EXAR FRONTIER GAL 3734

PVF INSIGHT 0129  
**HOFFMAN HIGH ROSE 7069**  
 MICH SC HIGH ROSE 526C

BW: 3.5 • WW: 64 • YW: 103 • MCE: 5.0 • MILK: 21

It sure has been fun watching this one grow. She has been a pasture favourite since a very young age. When you stop and analyze this female it becomes hard to find a hole in her. She is soft middled, smooth fronted, up headed, sound at the ground, and fluid in her movement. When you study her pedigree, you'll find it to be stacked with breed legends including Classen, Insight, First Class and Express; If there ever was a pedigree made to win shows and produce show heifers I think it would read something like hers. Her dam, High Rose 7069 is no stranger to the show ring. In 2017 she was shown along side her dam where they earned the title of Agribition Champion Angus Female and made the Top 10 in the RBC Beef Supreme. Opportunities like this don't come along everyday, don't miss out, High Rose 969J is one of a kind!

Consigned by Hollinger Land & Cattle and Nu-Horizon Angus



DAM AND GRANDDAM



HOFFMAN HIGH ROSE 7069 • DAM





**406**

J SQUARE S

*Enchantress*

141J

FEMALE • • 2193632 • • SIES 141J • • 22/01/2021

FF BLACK GOLD JF C19  
**J SQUARE S PRAIRIE GOLD 989G**  
 J SQUARE S GEORGINA 82C

SOO LINE MOTIVE 9016  
**J SQUARE S ENCHANTRESS 604D**  
 BROOKMORE ENCHANTRESS 229S

BW: 2.4 • WW: 56 • YW: 98 • MCE: 1.5 • MILK: 19

Enchantress 141J is a very eye appealing and has been the pick of the 2021 heifer calves by many visitors this year. Her sire was the high selling bull in 2019 and is co-owned with Nu Horizon Angus in Lipton, SK. The Enchantress cow family has been very successful here. Her granddam 229S, raised J Square S Fireman 14Y and is still in production today. We are very confident in what she will achieve as her pedigree features two of our most consistent cow families at the farm.

**Consigned by J Square S Angus**



J SQUARE S PRAIRIE GOLD 989G •  
 SIRE



ENCHANTRESS 229S • GRANDDAM





407

PREMIER

*Forever Lady*

137J

FEMALE • • APPLIED FOR • • PLS 137J • • 07/04/2021

MAY-WAY PERFECTION 384  
**MAY-WAY PLAY IT SAFE**  
MAY-WAY EMPRESS 1372

SILVEIRAS STYLE 9303  
**WEAVERS STYLE**  
LAZY H BAR FOREVER LADY 766

PE BW: 1.9 • WW: 57 • YW: 96 • MILK: 13

BW: 72 lbs.

Here is a young female with a world of potential! She has a unique lineage being the only daughter sired by May-Way Play It Safe in Canada. And hails from the great Lazy H Bar Forever Lady 5001 cow family, who has written volumes of success stories. She is flawless in her structure, a wide base heifer who's shoulder lays in nicely and is extended out through her front one third, she's the kind that stops you in your tracks. We feel 137 will be very competitive in the junior division next year. An added bonus, she scores a 10+ on disposition.

Consigned by Premier Livestock



MAY-WAY PLAY IT SAFE • SIRE





**408** PF *Black Licorice* RLP 28J

FEMALE • • 2201504 • • RLP 28J • • 16/02/2021

LD CAPITALIST 316  
**MUSGRAVE 316 COLOSSAL 137**  
 MUSGRAVE LADY BARBARA 545

S A V WALL STREET 7091  
**RP BLACK LICORICE RLP 5Y**  
 HF LICORICE 185W

BW: 1.0 • WW: 58 • YW: 99 • MCE: 8.5 • MILK: 25

We are very excited to be a part of this sale for 2021. When T-Bar C contacted us about consigning a female they had already heard about 28J from earlier fall shows and asked specifically for her which made us feel pretty good. 28J is a very unique female that we truly feel just gets better every day. This spring we had sent 28J out to pasture as we thought she might be too young to compete with the other heifer calves we had, however every time we would check this calf on grass we kept thinking she just keeps getting bigger and better and we started to think we sent the wrong one to pasture. By the end of August we brought her home and started working on her. 28J catches your eye right away with her presence, she is very pretty fronted and smooth made. She has incredible hair, a good middle and like her dam a perfect udder placement and docile temperament. We have noticed that all our Musgrave Colossal calves have a great foot and good structure on them. 28J was named grand champion intermediate heifer calf at the Olds Fall Classic. 28J will no doubt have an exciting future ahead of her.

Consigned by Pieschel Farms



CHAMPION INTERMEDIATE HEIFER CALF



RP BLACK LICORICE RLP 28J • DAM





409 FISK *Fay* 101

FEMALE • • 2217576 • • JENJ 101J • • 16/02/2021

NORTHERN IMPROVEMENT 4480 GF  
**WWSC SLIDER**  
 J T M EDITION'S QUEEN 107

PVF INAUGURATION 6174  
**PONDEROSA 6174 FAY 911**  
 JEN 527S FAY 106X

BW: 1.9 • WW: 39 • YW: 69 • MCE: 6.0 • MILK: 27

Fisk Fay 101 is a female you won't want to miss out on! With her impeccable build and pedigree, we feel she checks all the boxes. This is a heifer that has an undeniable eye appeal, body mass and plenty of muscle. She ties it all together with a set of feet and legs we wish we could put on every angus we breed. Sired by WWSC Slider who has a stacked maternal pedigree backed by TC Stockman, New Edition, and Lutton. After Austin had the chance to see him in person as a yearling display bull at the 2014 Ohio Beef Expo, we saw semen available and we jumped on the opportunity. Her dam is a beautiful uddered two year old ET daughter of Jen's 2011 First Lady Classic champion Fay 106X and PVF Inauguration (First Class x Insights Dam).  
**Consigned by Fisk Cattle Co.**



WWSC SLIDER • SIRE



JEN 527S FAY 106X • GRANDDAM





410

JUSTAMERE 101

*Blackcap* 335J

FEMALE • • 2234407 • • AFA 335J • • 20/01/2021

SANKEYS LAZER 609 OF 6N  
SANKEYS JUSTIFIED 101  
SANKEYS ERICA 525

HA COWBOY UP 5405  
EXAR BLACKCAP 1177  
QUAKER HILL BLACKCAP 3N18

BW: 2.6 • WW: 59 • YW: 103 • MCE: 0.5 • MILK: 20

We are excited to be a part of the CWA National Angus Sale. This daughter of the ROV Show Bull Of The Year in 2012 and 2013, Sankeys Justified 101, is a standout. Her mother EXAR Blackcap 1177 is a beautiful, moderate female with loads of capacity and an excellent set of feet and legs. The old saying goes "you never have enough great ones" we feel this rings true with this heifer calf. She will be a contender in any show on any level. Both Justified and Cowboy Up are proven herdsires that have contributed greatly to the Angus breed.

**Terms to be announced.**

**Consigned by Justamere Farms Ltd.**



EXAR BLACKCAP 1177 • DAM





411

CCCJ

*Beauty*

20J

FEMALE • • 2230013 • • CCCJ 20J • • 06/03/2021

S POWERPOINT WS 5503  
ELLINGSON PROFOUND 8155  
EA ROSETTA 6157

S00 LINE MOTIVE 9016  
CCCJ BEAUTY 4B  
SIX MILE REAL BEAUTY 803U

BW: 3.2 • WW: 66 • YW: 110 • MCE: 2.5 • MILK: 19

This heifer calf comes right off the very top of my herd. It took some convincing from both Shane and Ben for me to let her go. A direct daughter of the great Ellingson Profound out of a tank of a Motive daughter. The Profound bull is doing great things for Peak Dot Ranch, and with the semen in limited supply on the open market makes this heifer even more valuable. The Motive cow is as deep and soggy as you can make them with a perfect udder. She has been a standout producer, and will move into the donor program next year. An exciting opportunity for someone to own this female.

Consigned by Chance Jackson



CCCJ BEAUTY 4B • DAM





412

GUTZKE

*Tilda* 28J

FEMALE • • 2234982 • • GTKE 28J • • 26/03/2021

S A V HARVEST MOON 2244  
WIWA CREEK NORTHERN LIGHT 1830  
WIWA CREEK TIBBIE 219'12

REMITALL F BOYCOTT 71B  
WIWA CREEK TILDA 1703  
WIWA CREEK TILDA 529'15

BW: 3.4 • WW: 60 • YW: 103 • MCE: 4.5 • MILK: 24

Gutzke Tilda 28J is an impressive heifer calf with a very attractive look. This younger heifer is built correct from the ground up. Gutzke Tilda 28J is great haired, deep bodied and functional. Sired by Wiwa Creek Northern Light and going back to Motive, this heifers stacked pedigree will be of great maternal value. Gentle enough for a junior member to show or put these genetics to work in your breeding program.  
**Consigned by Gutzke Ranch**





413

COTTONWOOD

*Ballot* 12J

FEMALE • • 2230118 • • RTBG 12J • • 02/02/2021

BASIN PAYWEIGHT 1682  
DEER VALLEY GROWTH FUND  
DEER VALLEY RITA 36113

JL PRESEASON 5071  
JL BALLOT 8294  
JL BALLOT 5146

BW: 0.9 • WW: 70 • YW: 126 • MCE: 13.0 • MILK: 22

Ballot 12J is a moderate framed, bold ribbed, deep bodied and extremely stylish heifer out of the popular Deer Valley Growth Fund. Ballot is in the top 3% of WW and 2% YW. She has an outstanding weight to gain ratio

Consigned by Cottonwood Angus Farms



DEER VALLEY GROWTH FUND • SIRE





414

TRIPLE L

*Diamond Mist* 65J

FEMALE • • 2232537 • • RKT 65J • • 09/03/2021

S A V NATIONAL ANTHEM 5740  
BLAIRSWEST NATIONAL ANTHEM 15G  
BAR-E-L ERICA 74A

DMM INTERNATIONAL 54D  
DMM DIAMOND MIST 119G  
DMM DIAMOND MIST 40T

BW: 4.6 • WW: 55 • YW: 90 • MCE: 3.0 • MILK: 32

This sweet fronted ultra feminine heifer has made you take a second look all summer. She was destined for a great future here until Chris caught me at a weak moment. Her beautiful uddered dam was part of a 20 heifer package we purchased from the great Miller Wilson herd and couldn't be happier with the results. The sire has full sisters and brothers that have sold for huge dollars and out of "Erica" its no surprise. Hard to let go but looking forward to watching how she produces at her new home!!!

Consigned by Triple L Angus





POSS DEADWOOD • \$900,000 FEATURE

# 415 *Pregnant* RECIP

POSS DEADWOOD X PM TIBBIE 4'15

POSS MAVERICK  
**POSS DEADWOOD**  
 POSS ELLUNAMERE 399

BAR-E-L NATURAL LAW 52Y  
**PM TIBBIE 4'15**  
 POPLAR MEADOWS TIBBIE 17'10

PE BW: 0.7 • WW: 68.5 • YW: 123.5 • MCE: 10.5 • MILK: 26

The opportunity to have the first calf born in Canada sired by the \$900,000 talk of the world Poss Deadwood is something we are excited to offer in the National Angus Sale this year. The dam is an impressive natural law daughter who continues to out perform herself. Her natural calf was a sale feature last fall through the In It To Win It sale demanding \$22,500 and her 3 year old daughter has now produced 2 featured sons for our bull sale. EPDs, combined with the functional high quality phenotype we require all in one package. The resulting calf from this pregnancy will shine light on any program who's fortunate enough to take this recip home.

**Pregnant recip due February 27, 2022.**  
 Consigned by Gilchrist Farms



CF TIBBIE 440H • MATERNAL  
 SISTER TO PREGNANCY





**A • GILCO VELVET 1B • S A V NET WORTH 4200 X MILLENIUM VELVET**



**B • GILCO VELVET 3A • MCTL PURE PRODUCT 903-55 X MILLENIUM VELVET**



**C • JL FLOESSA 9028 • S A V PRESIDENT 6847 X LFE BA FLOESSA 97A**



**D • JL CASSIE 6094 • S A V RENOWN 3439 X JL CASSIE 0437**

# 416 *Right* TO FLUSH YOUR PICK OF FOUR PARKVIEW FARMS DONOR FEMALES

We are pleased to be involved in such a prestigious event as the 50th Agribition National Angus Sale. We have been vigorously attempting to acquire the most quality set of Angus females available. Listed in this consignment is 4 of our top donor females that meet all our credentials to be breed leading females.

Interesting to note our **A Lot and B Lot** happen to be maternal sisters, that have jaw dropping udders from a very excellent line of maternally bred cattle. The offspring they have produced for ourselves and at Gilco Angus have been superior and we are excited about their future here at Parkview.

**The C Lot** is the lead off bred heifer from the historic Johnson Livestock Dispersal, from the famed Floressa cow family stemming back to one of the foundation cow families at Hamilton Farms.

**Our D Lot** is one of favourites as she came highly recommended as the top Renown daughter of the entire JL Dispersal sale out of a fantastic Final answer cow from the the Cassie cow family, that was the highest averaging cow family from their dispersal. Please keep in mind as an added feature we are offering you to be the first to use semen on our \$71,000 JL Homegrown, who is one of the best Growth Fund sons out there.

**Terms of the flush are half down now and half at the completion of the flush. We are guaranteeing 8 embryos and 2 pregnancies as a bonus, with an open top to compliment the buyer. Please don't hesitate to contact us or T Bar C for more info or a viewing of these females.**

Consigned by Parkview Farms



**JL HOMEGROWN 0131 • \$71,000  
JL HIGH SELLING BULL**





**417** *Right*

TO FLUSH J SQUARE S KARAMA 922G

FEMALE • • 2111735 • • SIES 922G • • 15/01/2019

CONNEALY BLACK GRANITE  
FF BLACK GOLD JF C19  
JF BARBARAMERE Y3

S A V 004 DENSITY 4336  
BROOKMORE KARAMA 204X  
BROOKMORE KARAMA 40M

BW: 2.5 • WW: 61 • YW: 106 • MCE: 8.0 • MILK: 21

Karama 922G was the feature heifer calf in our first Female Focus Sale selling to Nolan Glover - GT Angus. Karama is a long bodied elegant fronted female, we believe that her exceptional udder and foot quality make her an exciting donor prospect with the pedigree and phenotype to work with many different matings. The successful bidder will have a fun time picking out semen. She was recently slapped Reserve Champion Female at Ag Ex in Brandon.

**Guarantee of 6 embryos. Purchaser can do either an IVF or conventional flush. To be conducted at Bow valley Genetics**  
Consigned by J Square S Angus & GT Angus



KARAMA 922G •  
PICTURED AS A BRED



BROOKMORE KARAMA 204X • DAM





# 418

TWO PACKAGES OF THREE SEXED FEMALE IVF REVERSE SORTED

*Embryos*

S A V AMERICA 8018 X COLEMAN CHLOE 900

S A V PRESIDENT 6847  
**S A V AMERICA 8018**  
 S A V MADAME PRIDE 0075

COLEMAN BRAVO 6313  
**COLEMAN CHLOE 900**  
 LAWSONS CHLOE C815

PE BW: 2.6 • WW: 75 • YW: 130 • MCE: 1.5 • MILK: 25

What an exiting mating for the 50th anniversary of Agribition and the National Angus Sale. The Chloe cow family from Coleman Angus has never been so popular and we are proud to own Chloe 900 entirely to ourselves. She is the full sister to the world renowned Coleman Triumph. Chloe 900 is also a full sister to the \$375,000 1/2 interest top selling female of Coleman's fall sale to Vos Angus in Iowa. Of course amongst many other sisters and brothers, this cow family is on fire and this is your chance to fast forward right to the top. The sexed female embryos come off the 1.51 million dollar America. This past fall we have seen America females tear up the fall sale season nationwide. Look at the projected EPD profile and the genetic potential of this cow family and get in on the ground floor of truly a rare mating that is destined for greatness.

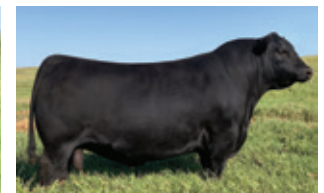
**Embryos are exportable, housed at Trans Ova Genetics  
 Consigned by La Conquista Ranches**



COLEMAN CHLOE 9275 •  
 FULL SISTER TO CHLOE 900



COLEMAN TRIUMPH 9145 •  
 FULL BROTHER TO CHLOE 900



S A V AMERICA 8018 •  
 SIRE OF EMBRYOS





BAR-E-L BRIDE 89J • BAR-E-L BRIDE 28C'S  
2021 HEIFER CALF



SCHIEFELBEIN SHOWMAN 338 • SIRE

**419**

TWO PACKAGES OF THREE

*Embryos*

SCHIEFELBEIN SHOWMAN 338 X BAR-E-L BRIDE 28C

SCHIEFELBEIN ATTRACTIVE 4565  
**SCHIEFELBEIN SHOWMAN 338**  
FROSTY ELBA 3745

BAR-E-L NATURAL LAW 52Y  
**BAR-E-L BRIDE 28C**  
DBRL 94T BRIDE 4W

PE BW: 0.9 • WW: 71 • YW: 121 • MCE: 9.0 • MILK: 22

BAR-E-L Bride 28C is a flawlessly made Bar-E-L Natural Law 52Y daughter from an elite cow family, the Brides! You can trace this lineage in many top individuals at BAR-E-L. It becomes obvious how influential these top dams could be in your program. In addition to an exceptional cow family, the opportunity to take advantage of the mating to Schiefelbein Showman, a bull who has created a lot of excitement, indeed a rare opportunity!

**Consigned by Bar-E-L Angus**





**420**

PACKAGE OF THREE

*Embryos*

CONLEY EXPRESS 7211 X PONDEROSA 1749 BLACKBIRD 136A

SMA WATCHOUT 482  
**CONLEY EXPRESS 7211**  
 DPL SANDY 3040

EXAR EMBLAZON 1749B  
**PONDEROSA 1749 BLACKBIRD 136A**  
 EXAR ENVIOUS BLACKBIRD 1719

PE BW: 3.2 • WW: 59 • YW: 99 • MCE: 5.5 • MILK: 22

An exciting opportunity to get in on one of our most highly anticipated matings. It combines two exceptional individuals; Conley Express 7211 who needs no introduction. His progeny have been in high demand south of the border as well as here in Canada. They are extremely eye appealing cattle that have a ton of substance, structural integrity, and breed character. Our Blackbird 136A donor is a female we love for her body dimension, beautiful neck extension and superb udder quality. Her progeny have highlighted past production sales and we anticipate them to do the same in years to come. Semen on Express is rare and difficult to obtain, mated with 136A, this combo is anticipated to be lights out good! Don't miss this opportunity. **Gauranteed one pregnancy if implanted by a certified technician. Embryos are stored at Bow Valley Genetics.**

Consigned by Hollinger Land & Cattle



CONLEY EXPRESS 7211 •  
 SIRE OF EMBRYOS



HLC PONDEROSA BLACKBIRD 574G  
 • DAUGHTER OF 136A



HLC EVENING TINGE 723H •  
 EXPRESS DAUGHTER





GRP

*Semen*

421

TWO PACKAGES OF FIVE STRAWS OF

BAR-E-L NATURAL LAW 52Y • • 1629829 • • DBR 52Y

G A R GRID MAKER  
S A V BISMARCK 5682  
S A V ABIGALE 0451

BAR-E-L MCC 365 ICON 20H  
BAR-E-L MAGNOLIA 143K  
DOUBLE FOUR DUCHESS 12G

BW: 3.1 • WW: 54 • YW: 100 • MCE: 8.0 • MILK: 22

Natural Law was born 10 years ago and has probably gained in popularity in the last couple years. Natural Law is truly one of the greatest female makers from 2 Agribition Supreme winners, 2 additional Agribition Top 10 placing females to countless others. His son PM Executive Decision is now making his mark as a great sire as well. His greatest achievement is that his daughters are not just gorgeous to admire but they are very productive cows. We have a very limited amount of semen available in Canada and have made the decision that this will be the last to sell for the spring 2022 breeding season.

Consigned by Poplar Meadows Angus

NATURAL LAW PROGENY







422

TRIPLE L

*Miss Essence*

59J

FEMALE • • 2234030 • • RKT 59J • • 28/02/2021

S A V NATIONAL ANTHEM 5740  
**BLAIRSWEST NATIONAL ANTHEM 15G**  
BAR-E-L ERICA 74A

S A V SENSATION 5615  
**DMM MISS ESSENCE 69G**  
DMM MISS ESSENCE 68W

BW: 3.1 • WW: 48 • YW: 85 • MCE: 5.5 • MILK: 23

We at Triple L decided to step up and give back to an Association we really believe in. My three kids have all benefited greatly through opportunities in the cattle part of Canadian Junior Angus and even more importantly through the friendships made. This daughter of a recent Miller Wilson purchase combined with a son of Bar E L Erica should be an awesome addition to the lucky winners herd.  
**Consigned by Triple L Angus**

### DONATION LOT - SELLS BY DUTCH AUCTION

Thank you to the Tetzlaff family for their generous donation of Triple L Miss Essence 59J. The proceeds will go directly to the Canadian Junior Angus scholarship program from which \$4500 is awarded annually to members of CJA.



# Consignor CONTACT

**BAR-E-L ANGUS** LOT 404, 419  
DAVE & LYNNE LONGSHORE  
Box 2056, Stettler, AB T0C 2L0  
Ph: 403.579.2394  
C: 403.740.6788  
E: barelangus@gmail.com

**BAR-H LAND & CATTLE** LOT 403  
ROBIN, MICHELLE & JOHN HOGBERG  
Box 927, Langenburg, SK S0A 2A0  
Robin: 306.743.7490  
John: 306.496.7696  
E: rthogberg@sasktel.net

**CHANCE JACKSON.** LOT 411  
Box 159, Sedley, SK S0G 4K0  
Chance: 306.537.4690  
E: jcc@sasktel.net

**COTTONWOOD ANGUS FARMS** LOT 413  
BRETT GAUBE  
Box 1587, Weyburn, SK S4H 0T1  
C: 306.537.4710  
E: gaubeb@outlook.com

**FSK CATTLE CO.** LOT 409  
AUSTIN & JENNIFER FISK  
Box 71, Hafford, SK S0J 1A0  
Jennifer: 780.214.4341  
Austin: 306.471.4558  
E: jennifer.j.jarrett@gmail.com

**GILCHRIST FARMS** LOT 415  
BRAD, KRISTIE & PEYTON GILCHRIST  
1269 Grey Ox Ave RR 5, Lucknow, ON N0G 2H0  
519.440.6720  
E: brad@gilchristfarms.com

**GT ANGUS** LOT 417  
NOLAN GLOVER  
Box 410, Wawota, SK S0G 5A0  
C: 306.575.6955

**GUTZKE RANCH** LOT 412  
BRODIE GUTZKE  
Box 114, Weyburn, SK S4H 2J8  
C: 306.861.6575  
E: brodiegutzke@hotmail.com

**HAMILTON FARMS** LOT 401  
ROB & GAIL HAMILTON  
274132 Rge Rd 33, Rockyview County, AB T4C 2Y2  
Rob: 403.540.3186  
Gail: 403.540.8291  
Joel: 403.808.6341  
E: angus@hamiltonfarms.ca

**HOLLINGER LAND & CATTLE** LOT 405, 420  
CHAD & BREANNE, TREVOR & MEL  
Box 276, Neudorf, SK S0A 2T0  
Chad: 306.331.0302  
Herdsman: Mark Piller: 306.730.7170  
E: hollingerlandandcattle@gmail.com

**J SQUARE S ANGUS** LOT 406, 417  
JORDAN, JACKLYN, JAYLA, SCOTTIE, & ALLY SIES  
STUART & KATHY SIES  
Box 8, Grayson, SK S0A 1E0  
C: 306.728.1299  
E: sieser94@hotmail.com

**JUSTAMERE FARMS LTD.** LOT 410  
JON & SHELLY FOX  
Box 320, Lloydminster, sk s9v 0t2  
Jon: 780.808.6860  
Jon V: 306.821.4182  
E: justamere@sasktel.net

**LA CONQUISTA RANCHES** LOT 418  
LUIS BURCIAGA & ANA MARROQUIN  
14 - 900 Village Lane, Okotoks, AB T1S 1Z6  
403.918.3797  
403.863.5802  
E: laconquistaranches@outlook.com

**NU-HORIZON ANGUS** LOT 405  
KIERAN, DEB & KODIE DOETZEL  
Box 227, Lipton, SK S0G 3B0  
Kieran: 403.357.7648  
Kodie: 306.331.0384  
E: kdknuhorizon@gmail.com

**PARKVIEW FARMS** LOT 416  
MIKE SCHMIDT  
RR 1, Falun, AB T0C 1H0  
780.387.6355

**PIESCHEL FARMS** LOT 408  
RAE-LEE & DEVON ERICKSON  
261245 RR 284, Rocky View County, AB T4B 2L7  
Devon: 403.586.4047  
Rae-Lee: 587.223.2331  
E: raeleepieschel@gmail.com

**POPLAR MEADOWS ANGUS** LOT 421  
TANYA & MONTY BELSHAM  
Box 1025, Houston, BC V0J 1Z0  
Tanya: 250.845.8474  
E: tdbelsham@gmail.com

**PREMIER LIVESTOCK** LOT 407  
PETER FRIJTERS  
5164 Line 58 RR 2, Milverton, ON NOK 1M0  
C: 519.276.9314  
E: peter@premierlivestock.ca

**TRIPLE L ANGUS** LOT 414, 422  
RANDY & KIM TETZLAFF  
Box 157, Viscount, SK S0K 4M0  
C: 306.231.6969  
E: tetz@sasktel.net

**YOUNGDALE ANGUS** LOT 402  
BARRY & MARJ YOUNG  
Box 28, Carievale, SK SOC OPO  
Barry: 306.482.7952  
Robb: 306.339.8330  
Damian: 306.482.8319  
E: youngdaleangus@explornet.com

## Terms AND CONDITIONS

### TERMS:

The terms of the sale are cash or cheque, payable at par at the sale location. The right of property shall not pass until after settlement has been made; no invoicing on buyers in attendance unless previous arrangements have been made. Every animal sells to the highest bidder and in cases of disputes, the auctioneer's decision will be final. Announcements from the auction block will take precedence over the printed matter in the catalogue. Current exchange rates will be announced sale day. All monies are in Canadian funds.

### CERTIFICATE OF REGISTRATION:

Each animal will carry papers issued by the Canadian Angus Association unless otherwise stated. A certificate of registry duly transferred will be furnished to the buyer for each animal after payment has been made.

### PEDIGREE ESTIMATES:

Pedigree Estimates (PE) are created on the projected mating of the animal's sire and dam based on averages of the two, creating estimated values that do not hold the same accuracy of actual EPDs issued from the association and should be used as such.

### HEALTH:

All animals in the sale have met all necessary health requirements.

### GUARANTEE:

Each animal becomes the purchaser's risk immediately after the animal is sold. All animals in this sale will be sold under the terms and guarantees set forth by the Canadian Angus Association with regard to health, freedom from defects and from both reproductive and specific genetic unsoundness.

### PREGNANCY INFORMATION:

All serviceable age females have been pregnancy examined by an accredited veterinarian, giving an estimated

length of gestation. This estimated gestation period shall be used only as a guideline to calving and is not a guarantee of actual service.

### LIABILITIES:

All persons attend the sale at their own risk. The seller, facility owner and sale manager assume no liability legal or otherwise, for any accidents that occur. It is understood that T Bar C Cattle Co. (2013) Ltd. is acting only as a medium between buyer and seller and is not responsible for any failure on the part of either party to live up to his obligations. Neither does T Bar C Cattle Co. (2013) Ltd. assume any financial obligations to collect or enforce collection of any monies between parties and any legal action that may in exceptional cases be taken must be between the buyer and the seller. T Bar C Cattle Co. (2013) Ltd. assumes no responsibility for any credit extended by the seller to the buyer. The buyer must look to the seller for fulfillment of all guarantees and representations made hereunder.

### DELIVERY:

Every assistance will be given in getting your purchases home. Each animal becomes the risk of the purchaser as soon as sold.

### PHONE, MAIL, WIRE BIDS:

Bidders unable to attend the sale may phone, wire or mail their bids and instructions to the sale manager, auctioneer or special representatives. Bids must be received in sufficient time prior to the sale.

### INSURANCE:

We strongly recommend that insurance is purchased for full value.

### ERRORS:

All announcements at sale time, written or oral, supersede any written material in the catalogue.





CANADIAN WESTERN AGRIBITION  
50TH ANNIVERSARY ANGUS SALE